

Raleigh Parks, Recreation &
Cultural Resources Department

Neighborhood & Community Connections Program

Battle Ridge Communities
Greenway Trail Connector Projects

Open House

Barwell Park Community Center

August 16, 2023



Raleigh





N&CC Program

Program Goals and Background

- To identify, prioritize, and build new walkable connections to parks and greenways.
- To promote health equity throughout the city to guide investment in those communities which are most at-risk of negative health outcomes and most in need of improved access to outdoor recreation opportunities.
- Neighborhoods prioritized for investment were identified primarily using the Wake County Community Vulnerability Index.
- This index is based on socioeconomic and demographic indicators that correlate with high vulnerability to negative mental and physical health outcomes such as heart disease, obesity, chronic stress, and depression—health outcomes which can be mitigated with improved access to parks and recreation opportunities.
- Geographic Information System (GIS) model was developed by the City in support of the N&CC Program



N&CC Program

Additional Criteria Used

In addition to the equity and level of service criteria, the following criteria are also used to determine N&CC project locations

- Improvement of access in neighborhoods which are more than ½-mile from the nearest greenway access point.
- Proximity of access to transit (including proposed Bus Rapid Transit (BRT) and Transit Overlay District (TOD) areas).
- Safety and proximity to existing pedestrian infrastructure such as sidewalks.
- Feasibility based on existing property rights, construction cost, and permitting requirements.

Equity Priority can be determined by analyzing five key indicators of community health and well-being, as defined by Wake County Human Services' Community Vulnerability Index:



1. Unemployment: Population age 16 and over who are unemployed in the civilian labor force;



2. Low Educational Attainment: Population over age 25 who have less than a high school diploma;



3. Age Dependency: Population under the age of 18 and over the age of 64 combined;



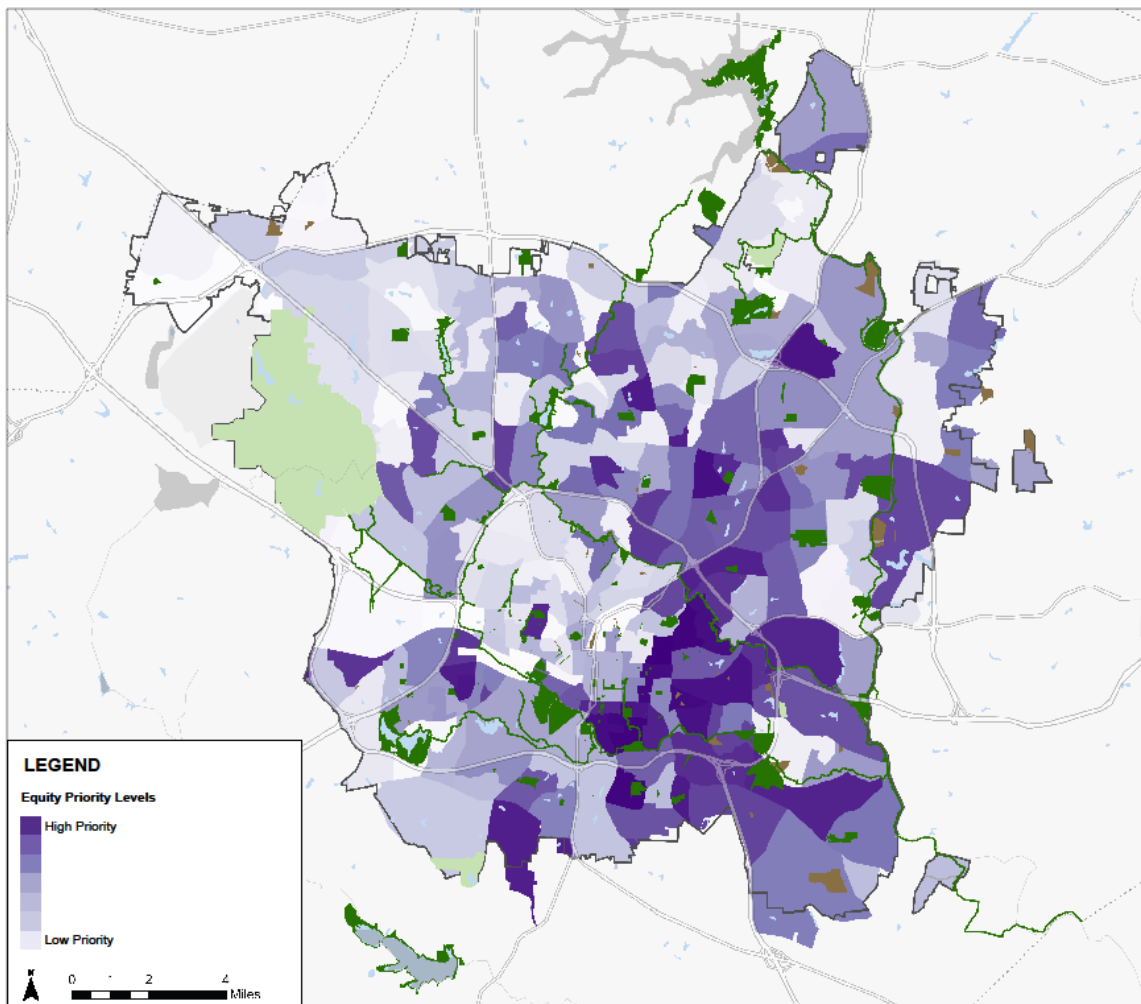
4. Housing Vacancy: The total number of vacant or unoccupied housing units in a block group;



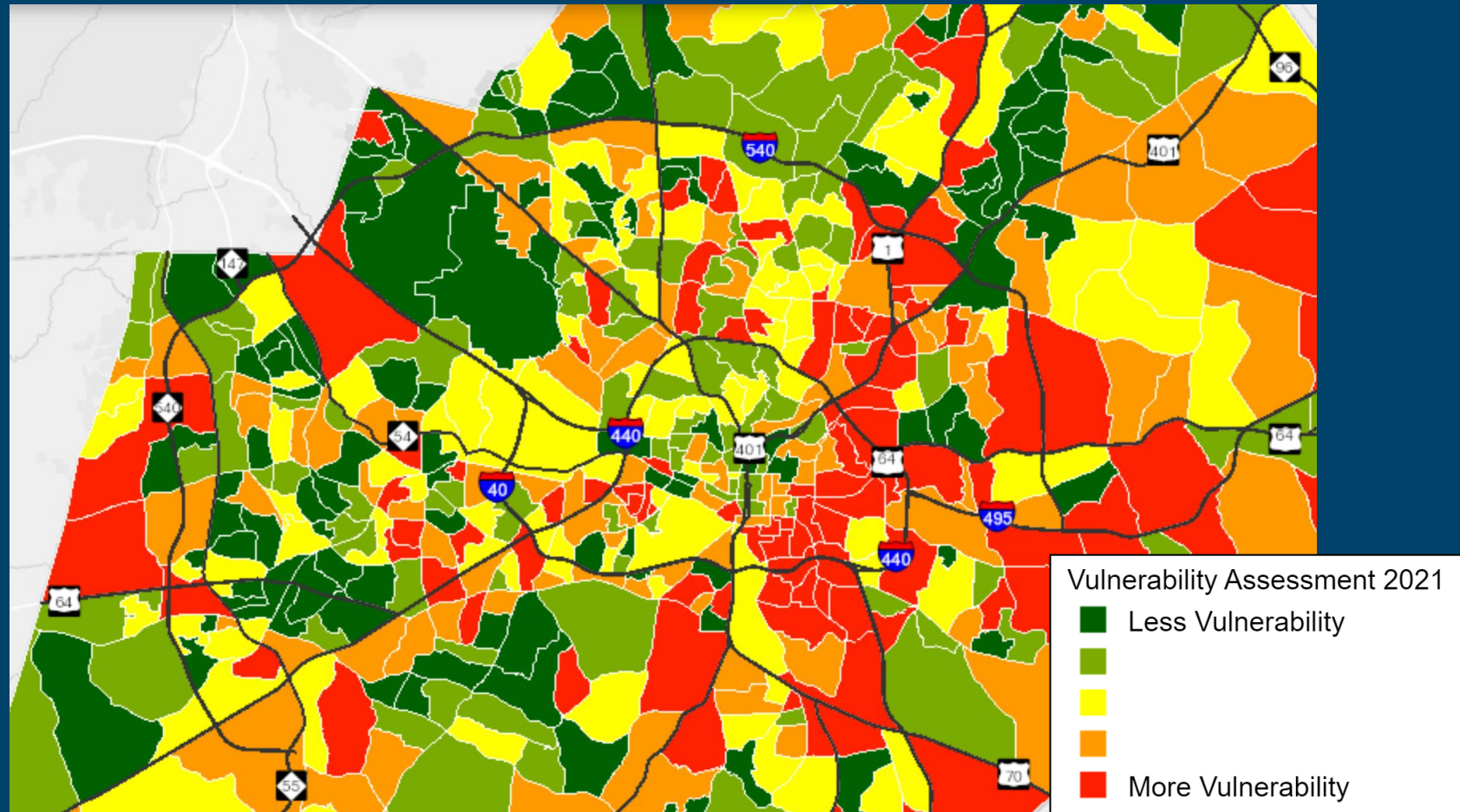
5. Poverty Rate: The population living below the federal poverty threshold in Wake County;

Communities exhibiting a high concentration of these five demographic and socioeconomic indicators are more likely to experience negative health outcomes such as heart disease, obesity, chronic stress, and depression—outcomes which can be mitigated with better access to high-quality open spaces, outdoor recreation, and safe places to play and exercise.

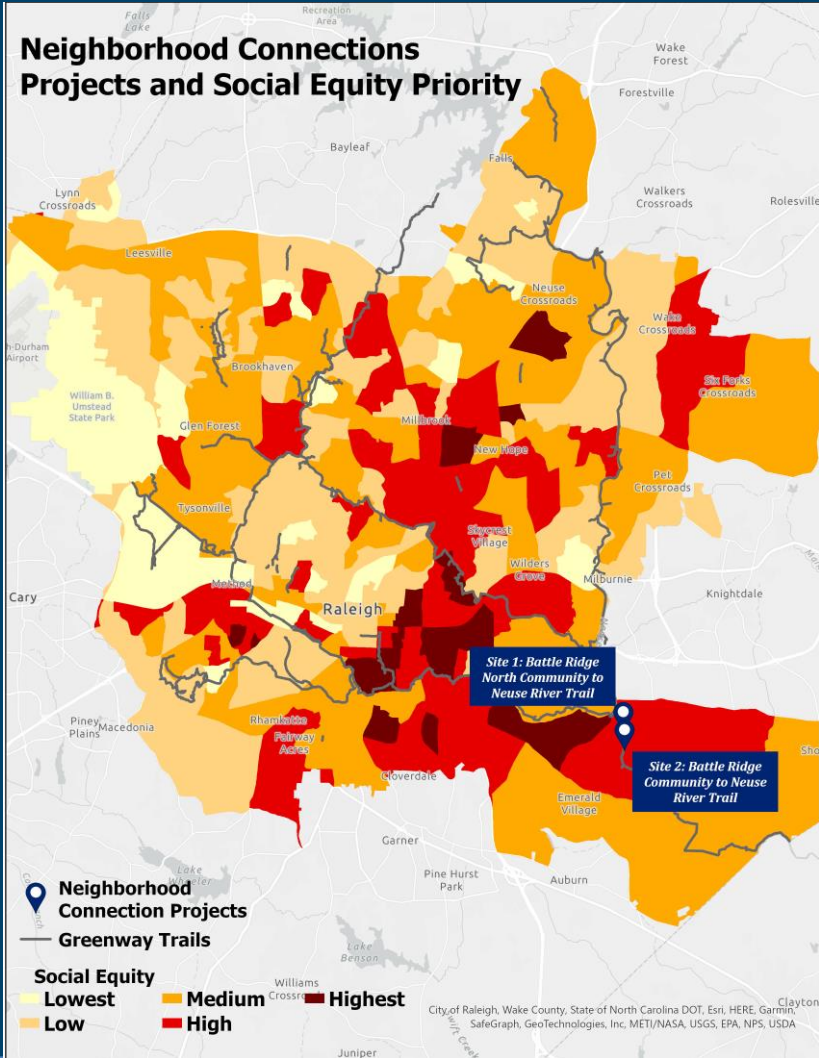
Prioritizing investments in these communities helps ensure that PRCR sites, facilities, and programs are more accessible to the communities that will benefit most from these public resources.



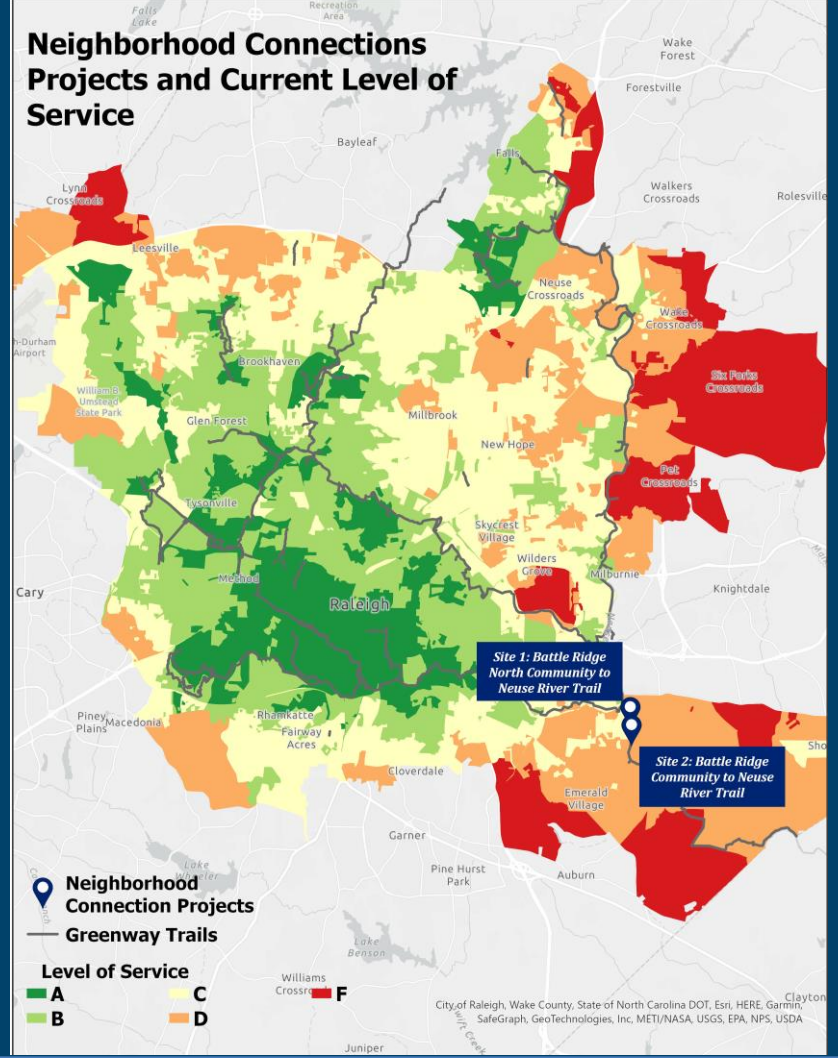
Wake County Community Vulnerability Index



Neighborhood Connections Projects and Social Equity Priority



Neighborhood Connections Projects and Current Level of Service





N&CC Program

2014 Parks Bond Referendum

Funding - \$1 million funded in 2014 Parks Bond to improve walkable access to neighborhood parks & greenway trails

Connector Location	Park/Greenway	Status
Edwards Mill Road to Laurel Hills Park	Laurel Hills Community Center/Park	Complete
Ray Road to Lake Lynn Park	Lake Lynn Community Center/Park	Complete
Ileagnes Road to Peach Road Park	Peach Road Park	Complete
N. King Charles Road to Crabtree Creek Trail	Crabtree Creek Trail	Complete
Midtown-St. Albans to Crabtree Creek Greenway Trail at Industrial Drive	Crabtree Creek Trail	Complete
Vintage Drive to Walnut Creek Trail	Walnut Creek Trail	Complete
Sunnybrook Road Property to Crabtree Creek Trail	Crabtree Creek Trail	Public Engagement
Battle Ridge Community to Neuse River Trail (2 locations)	Neuse River Trail	Public Engagement
Lake Boone Trl to House Creek Greenway Trail	House Creek Trail	Public Engagement

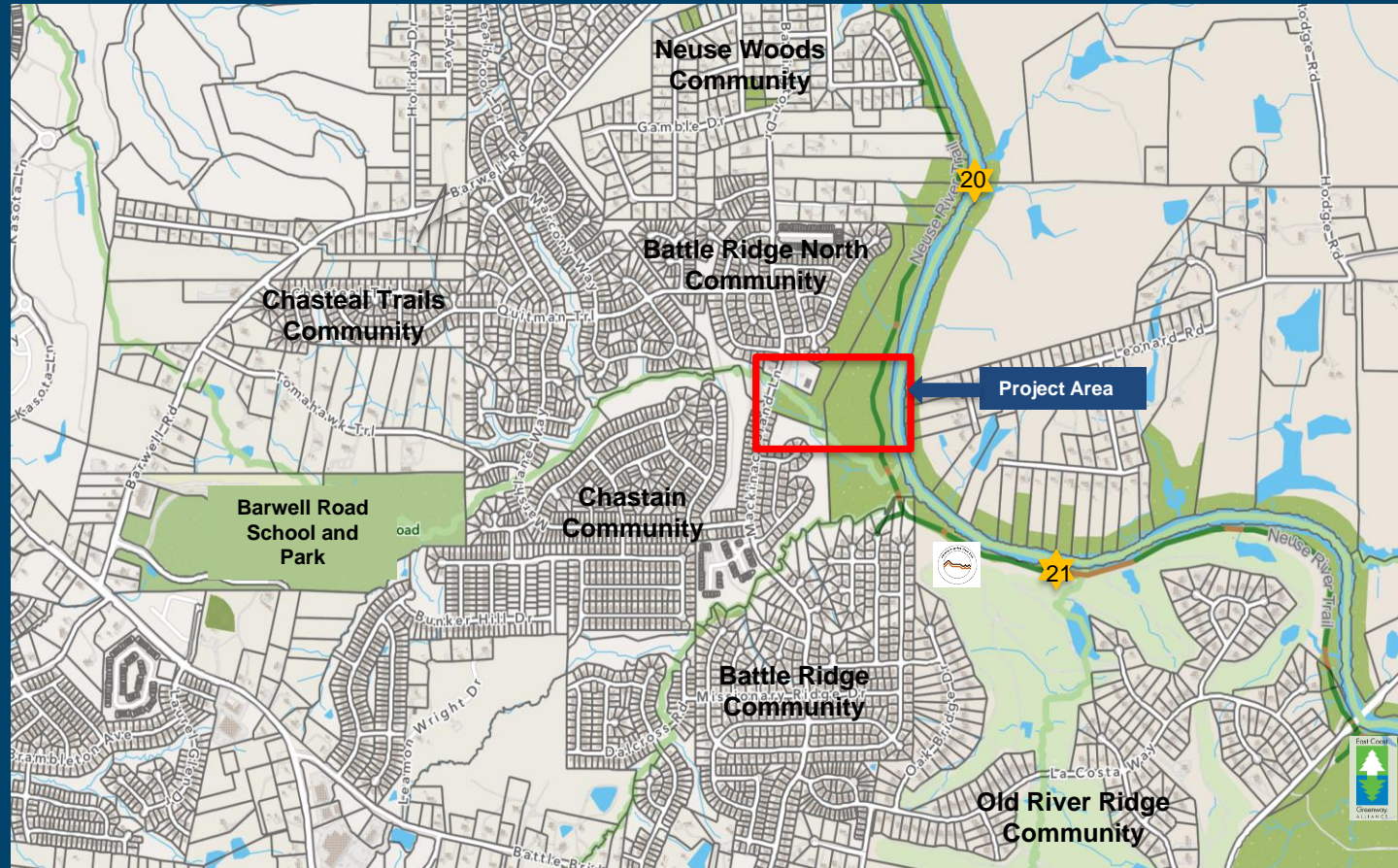


N&CC Program



Battle Ridge Communities to Neuse River Trail Connectors

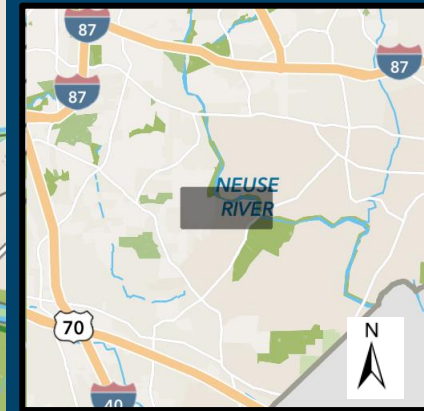
- Greenway connector trail from two locations in Battle Ridge communities to the Neuse River Trail
 - Community Playground at Mackinac Island Ln (Battle Ridge North)
 - Mechanicsville Run Ln (Battle Ridge)
- Greenway easements will need to be acquired – staff to coordinate
- 10-foot-wide trail
- Provides greenway connectivity and access to many miles of the Capital Area Greenway system
- Future connection along greenway corridor to Barwell Park

Battle Ridge North to Neuse River Trail Connector at Mackinac Island Lane



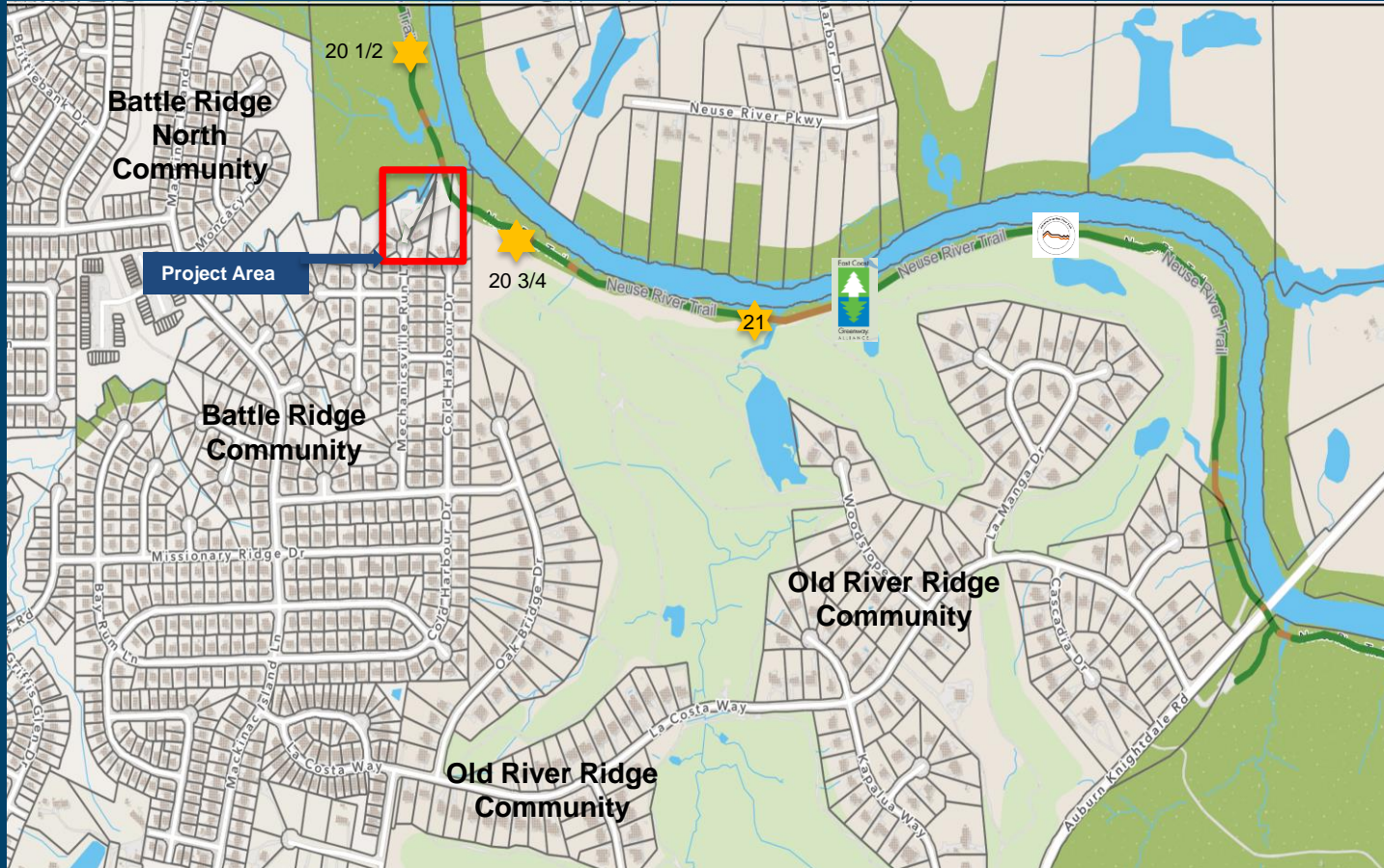
LEGEND

-  Project Area
-  Mile Marker
-  Neuse River Trail



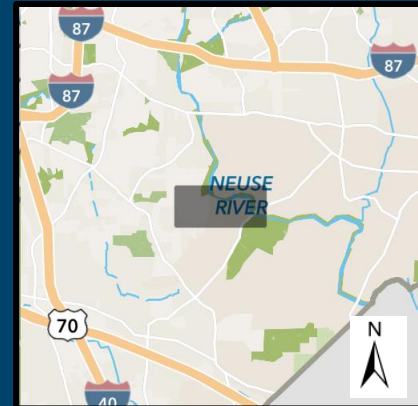
Project Area Map

Battle Ridge Community to Neuse River Trail Connector at Mechanicsville Run Lane



LEGEND

-  Project Area
-  Mile Marker
-  Neuse River Trail



Project Area Map



N&CC Program

Battle Ridge Community Connector Trail Projects

Next Steps

August 16, 2023

Community Engagement Meeting
Barwell Park, 4:30 pm – 6:30 pm

September 2023 - Spring 2024

Advance Design + Easement Acquisition

Spring 2024

Estimated Start of Construction

Late 2024

Estimated Construction Completion

Thank you

Neighborhood & Community Connections Webpage:

<https://raleighnc.gov/parks/neighborhood-community-connections-program>

For more information contact:

Parks, Recreation & Cultural Resources Department

David P. Bender

919-996-4798

David.bender@raleighnc.gov

